

# SPEC SHEET + MEASUREMENTS

PORT AUTHORITY.

Port Authority® Women's Flexshell Jacket. L617

## Product photo



With supple 4-way stretch for easy mobility, this soft shell jacket flexes and moves, while shielding you from the elements with 5K/5K weather-fighting protection.

- 100% polyester knit bonded to a water-repellent, breathable film insert and 100% polyester fleece lining
- Fabric waterproof rating: 5000MM
- Fabric breathability rating: 5000G/M<sup>2</sup>
- Reverse coil zippers
- Front zippered pockets
- Slightly longer length • Side vents • Open hem • Water protection method: Laminate film and durable water-repellent finish (DWR)

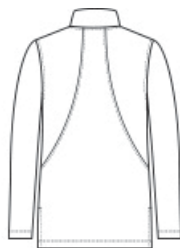
### CARE INSTRUCTIONS

Machine Wash Cold Separately Or With Like Colors. Only Non-Chlorine Bleach When Needed. Tumble Dry Low. Cool Iron If Necessary.

## Sketches



front



back

# SPEC SHEET + MEASUREMENTS

PORT AUTHORITY

Port Authority® Women's Flexshell Jacket. L617

## PRODUCT MEASUREMENTS

	XS	S	M	L	XL	XXL	3XL	4XL
Size	2	4/6	8/10	12/14	16/18	20/22	24/26	28/30
Body Length at Back	27	27 1/2	28	28 1/2	29	29 1/2	30	30 1/2
Bust	18 5/8	19 5/8	20 5/8	22 1/8	23 5/8	25 1/8	27 1/8	29 1/8
Sleeve Length from Center Back	32	32 1/2	33	33 5/8	34 1/4	34 7/8	35 1/4	35 5/8

**Body Length at Back:** Measured from high point shoulder to finished hem at back.

**Bust:** Measured across the chest one inch below armhole when laid flat.

**Sleeve Length from Center Back:** Measure from Center Back neck to shoulder point to sleeve hem.

## SIZE CHARTS

	XS	S	M	L	XL	XXL	3XL	4XL
Size	2	4/6	8/10	12/14	16/18	20/22	24/26	28/30
Bust	32-34	35-36	37-38	39-41	42-44	45-47	48-51	52-55

# SPEC SHEET + MEASUREMENTS

PORT AUTHORITY.

Port Authority® Women's Flexshell Jacket. L617

## HOW TO MEASURE

---



### **BUST**

Measure under the arm and around the fullest part of the bust with arms down, keeping tape horizontal.

## COLORS

---



Deep Black  
PMS BLACK  
C



Grey Steel  
PMS 7540C



Smoke Grey  
PMS COOL  
GRAY 11C



True Navy  
PMS 533C