

# SPEC SHEET + MEASUREMENTS



## Mercer+Mettle® Puffy Vest. MM7214

### Product photo



With a design that easily transitions from office to street to home, and a soft, supple hand, this cold-weather layer is luxurious and high-performing. With a moisture-shedding DWR exterior, the interior features lofty, lightweight insulation for down-like warmth and the easy care of a synthetic. **Fabric +Weight**

- 100% polyester
- 5K/3K waterproof breathable fabric
- 6-ounce, 100% polyester blown insulation

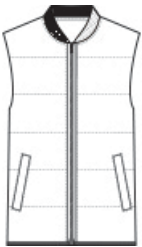
### Features+Benefits

- Baseball-style rib knit collar
- Molded front zipper
- Zippered hand pockets
- Elastic binding at hem

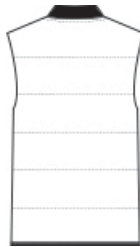
### CARE INSTRUCTIONS

Machine Wash Cold Gentle Cycle With Like Colors. Only Non-Chlorine Bleach When Needed. Tumble Dry Low. Cool Iron If Necessary. Do Not Dry Clean.

### Sketches



front



back

# SPEC SHEET + MEASUREMENTS



## Mercer+Mettle® Puffy Vest. MM7214

### PRODUCT MEASUREMENTS

	XS	S	M	L	XL	2XL	3XL	4XL
Body Length at Back	25	26	27	28	29	30	30 3/4	31 1/2
Chest	19	20 1/2	22	23 1/2	25 1/2	27 1/2	30	33

**Body Length at Back:** Measured from high point shoulder to finished hem at back.

**Chest:** Measured across the chest one inch below armhole when laid flat.

### SIZE CHARTS

	XS	S	M	L	XL	2XL	3XL	4XL
Chest	32-34	35-37	38-40	41-43	44-47	48-51	52-56	57-61

### HOW TO MEASURE



#### CHEST

Measure under the arm and around the fullest part of the chest with arms down, keeping tape horizontal.

# SPEC SHEET + MEASUREMENTS



Mercer+Mettle® Puffy Vest. MM7214

## COLORS

---



Anchor Grey  
PMS 426C



Deep Black  
PMS BLACK  
C



Night Navy  
PMS 532C